

APARTMENTS FURNISHED

- ◆ **INDIVIDUAL ENERGY EFFICIENT HEATING & AIR CONDITIONING SYSTEM**
- ◆ **BEDROOM CARPETING**
- ◆ **WINDOW BLINDS**
- ◆ **ELECTRIC RANGE**
- ◆ **REFRIGERATOR**
- ◆ **SMOKE DETECTOR AND CO DETECTOR**
- ◆ **WATER AND SEWER**
- ◆ **TRASH PICK UP**
- ◆ **EXTERIOR LIGHTING**
- ◆ **SECURED ACCESS**
- ◆ **24 HOUR MAINTENANCE SERVICE**

Developed By

Western Egyptian E.O.C., Inc.



Serving The Community Since 1965



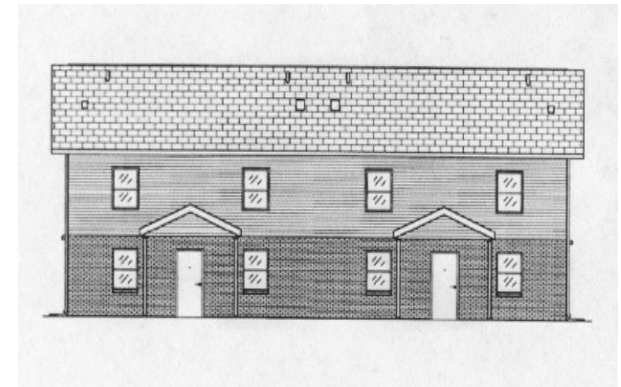
**EQUAL HOUSING
OPPORTUNITY**

FUNDED BY

**Illinois Housing
Development Authority**

Pyramid Manor Apartments

**For Comfort And Ease
Of Living, Come See
The Pyramid Manor
Apartments**



**301 North Hasle
Sparta, Illinois 62286
(618) 965-3193**



W.E.E.O.C. PROPERTIES

Property Management

.....
Safe Affordable Housing

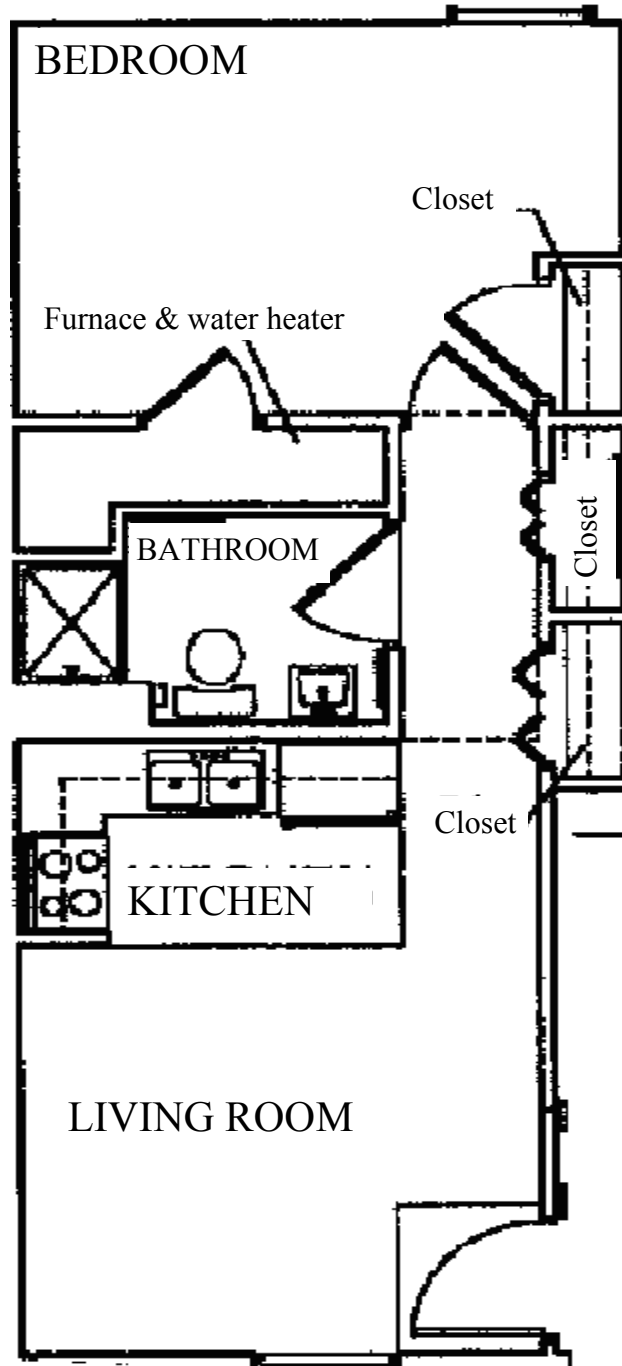
Energy Efficient Design

**8 Unit Building with 2 Fully
Accessible Handicapped
Apartments**

.....
**WEEOC OFFICE
1130 N. Sparta St.
Steeleville, IL 62288**

**FOR INFORMATION:
(618) 965-3193**

Floor Plan



Special Features

- ✓ Handicap VISIBLE—1st Floor Only
- ✓ Comfortable Sized Rooms
- ✓ Handy Kitchen Design
- ✓ Gas Heat/Water
- ✓ Individual High Efficiency Central AC and Heating System
- ✓ Double Insulated Windows
- ✓ High Efficient Lighting
- ✓ Ample Closet Space
- ✓ Convenient Living
- ✓ Affordable Rent Payments
- ✓ Low Monthly Utility Bills
- ✓ Off Street Parking
- ✓ 24 Hour Maintenance
- ✓ School Bus Pick Up
- ✓ Nice Backyard
- ✓ Located Near Public Schools, Shopping Centers, and Public Swimming Pool